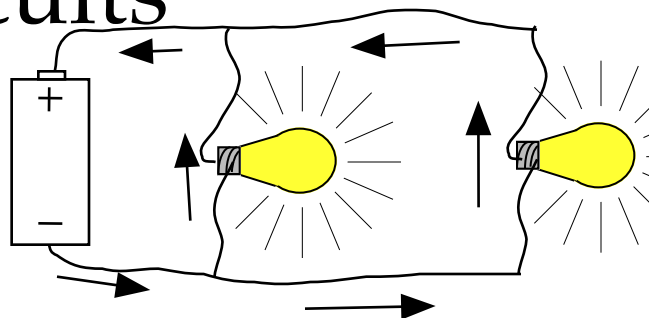


Name _____

Date _____

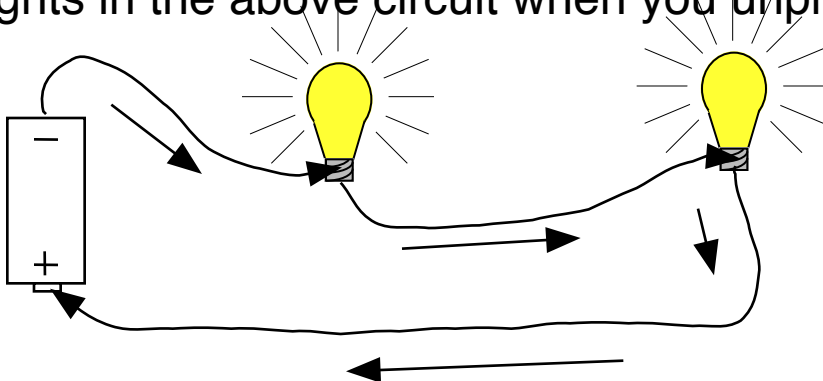
Electric Circuits

A. Parallel



1. Compare the brightness of the lights in the PARALLEL circuit to the series circuit. _____

2. What happens to the lights in the above circuit when you unplug one of them?



B. Series

1. Describe the brightness of the lights in the SERIES circuit as it compares with the parallel circuit.

2. What happens to the lights when you unplug one of them?

3. What kind of circuit are Christmas tree lights? Think about it and EXPLAIN.

Extra Credit: Does it matter if you flip the battery over and reverse the flow of electrons? Why or why not?